



The RIGHT TO VOTE is the heart of our DEMOCRACY. The quality of our schools, our ability to access affordable housing, employment opportunities and quality healthcare all depend on **OUR VOTE** and who represents our interests.

prepared to MISSISSIPPI VOTE

**REGISTER TO VOTE
VOTING ABSENTEE
VOTING ON ELECTION DAY**

REGISTER TO VOTE

Even if you think that you are registered to vote, you can check your registration before October 5, 2008 to verify your status for the November 4, 2008 General Election. Contact your county Circuit Clerk or the Mississippi Secretary of State at (800) 829.6786 to verify your registration.

WHEN DO I REGISTER?

- You must register thirty days before Election Day to vote.
- The registration deadline in Mississippi is Sunday, October 5, 2008. However, because October 5 is a Sunday, you should mail in or deliver your registration application before this date to avoid missing the deadline. A mail-in registration must have a U.S. postmark by the deadline to be valid.



AM I ELIGIBLE?

You are eligible to vote if you are a citizen of the United States who:

- has lived in the State of Mississippi for thirty days;
- has resided in the city and county of Mississippi where they wish to vote for thirty days;
- will be 18 years old by the November 4, 2008 General Election (even if you are not 18 on Sunday, October 5, 2008);
- has not been declared mentally incompetent by a court; and
- has not been convicted of a disqualifying state law felony.

HOW DO I REGISTER TO VOTE?

Obtain a Voter Registration Application!

Registration applications are available:

- at the Circuit Clerk's Office;
- at a Driver's License Facility;
- at an agency where you receive public assistance; such as Food Stamps, Medicaid, Women, Infant and Children benefits (WIC), and Temporary Assistance to Needy Families (TANF) benefits;
- at a State-funded office serving people with disabilities;
- at military recruitment centers;
- through a voter registration drive; or
- at www.sos.state.ms.us (scroll over the heading "Elections" and click "Register to Vote").

Deadline to Mail An Application

Mail-in voter registration forms must be postmarked no later than Sunday, October 5, 2008 for the November 4, 2008 General Election. Since many post offices are closed on weekends, you should mail your application before this date to avoid missing this deadline.

WHAT HAPPENS AFTER I COMPLETE MY APPLICATION?

You will receive confirmation that your registration is complete. If you register by mail or through a voter registration drive, look for your confirmation in the mail!

If you do not receive your registration confirmation, call your County Circuit Clerk immediately to check the status of your registration application.

ASSISTANCE COMPLETING A VOTER REGISTRATION FORM

You can receive assistance completing a voter registration application from any person you choose. The Circuit Clerk has a duty to assist voters in completing their application when requested.



WHAT IF I MOVED?

Did you move within your current county? If you did not leave the county you can TRANSFER YOUR REGISTRATION!

How do I transfer my registration?

- Notify your county clerk, in writing, thirty days before Election Day to transfer your registration to your new ward or voting precinct; or
- Complete another registration application and the County Circuit Clerk will treat the your application as an automatic registration transfer.

Did you move to a new county? If you moved to a new county BEFORE Election Day and you have resided in your new county for thirty days, you have to re-register. Submit a new registration application to your County Circuit Clerk before Sunday, October 5, 2008.

DO NOT WAIT! It is best to update your address as soon as you move so you can cast a regular ballot.

Displaced by hurricanes or flooding?

A voter who is temporarily displaced, and intends to return to his/her home, can vote in his/her home county.

ARRESTED?

An arrest alone does not stop you from voting! Only convictions for certain crimes may disqualify you from voting.

Even if you are currently incarcerated, you can still register and vote absentee unless you were convicted of a specific crime.

If you were convicted of a crime, call 1.866.OUR.VOTE to determine if you retained your right to vote.

Know Your Polling Place Before Election Day!

- Check your voter registration card, which includes your poll location.
- Call your local County Circuit Clerk.

CAN I VOTE ABSENTEE?

In Mississippi you can vote absentee for several reasons including:

- you will not be in the county where you are registered to vote on Election Day;
- you have a temporary or permanent disability;
- you are sixty-five (65) years of age or older;
- you are required to be at work on Election Day during the times when the polls will be open; or
- you are a Mississippi resident who is in the federal service or resides outside the United States (or you are an immediate family member living with them).

VOTING ABSENTEE IN PERSON

Mississippi voters who will be away on Election Day can vote absentee in-person at the County Circuit Clerk's office.

If you are voting absentee in-person you can apply for your ballot in-person at the County Clerk's office and vote the same day.

ABSENTEE VOTING BY MAIL

Request an Absentee Ballot

1. Request an absentee ballot by calling or writing the Circuit Clerk's office in the county where you are registered. You must provide your name and complete address
2. Send the absentee ballot application to your Circuit Clerk as early as possible;
3. Your Circuit Clerk will mail your absentee ballot to the address you provide within 24 hours or as soon as the ballots are available if you are eligible to vote absentee.

Complete your Absentee Ballot

Follow the instructions when you receive your absentee ballot by mail.

Witnesses

If you complete your ballot in your home county, the Circuit Clerk must serve as the witness unless you are temporarily or permanently disabled.

If you are not in your home county, remember to sign across the flap!

You and a witness must sign your absentee ballot across the flap of the ballot envelope for your ballot to be valid.

Who can the witness be?

- A notary public (usually at a bank);
- A U.S. postmaster, an assistant U.S. postmaster, a U.S. postal supervisor, or a clerk in charge of a contract postal station (authenticated with a cancellation stamp); or
- Any officer having the authority to administer an oath or take an acknowledgment

Exception: If you are voting absentee because you are temporarily or permanently disabled, the witness can be any person 18 years of age or older.

When and Where Do I Return My Absentee Ballot?

Your County Circuit Clerk must receive your completed absentee ballot by 5:00 pm on November 3, 2008, the day before Election Day.

Contact your County Circuit Clerk for more information on voting absentee.

VOTING ON ELECTION DAY

Polling Place Hours

Polling places are open from 7 a.m. until 7 p.m. If you are in line at the polling place at 7 p.m. you can vote.

Identification on Election Day

Mississippi does not have an Election Day photo identification law.

The ONLY time a Mississippi voter needs to provide a form of personal identification on Election Day is when he/she registered by mail but did not provide the last four digits of his/her social security number, a driver's license number, or a copy of a utility bill, bank statement, photo identification, government check,

paycheck, or other government document showing the voter's name and address with the application.

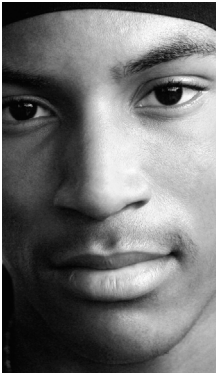
If you provide this information when you mail in your registration, you do not need personal identification on Election Day.

Even if you do not have these forms of identification on Election Day, you may still cast a ballot.

VOTER INTIMIDATION

Voter intimidation occurs when people try to stop others from voting or control who they vote for. You have the right to vote, to keep your vote a secret, and to vote for the candidate you choose.

If you encounter any type of voter intimidation you should immediately contact the U.S. Department of Justice at 1.800.253.3931 or the National Election Protection Hotline at 1.866.OUR.VOTE.



PAPER BALLOTS YOU MAY SEE ON ELECTION DAY

Emergency Paper Ballots

If you appear at the polling place and a voting machine is not working you do not have to wait until the machine is fixed or come back later to vote.

Instead, when a machine is not working you should receive an emergency paper ballot. Election officials count

emergency paper ballots just like a regular ballot when the polls close.

Affidavit Ballots

If you appear at the polling place and you are not on the registration list you can vote by casting an affidavit ballot in your assigned precinct.

What You Need to Know About Affidavit Ballots

If you cast an affidavit ballot make sure you:

- are in the correct polling precinct (the poll official can tell you your correct polling place);
- sign the affidavit ballot register;
- complete and sign the entire affidavit;
- make sure the poll manager signs the affidavit; and
- follow the instructions election managers or poll workers provide.

When you finish voting by an affidavit ballot you will receive a telephone number that you can call to determine if your ballot was counted.

VOTE TUESDAY, NOVEMBER 4, 2008!

VOTING ON NEW MACHINES

If you are voting on a new "Touch and Vote" machine, be sure to:

1. Review your choices on the summary page. If a race is red that means you left that race blank or it was incomplete. If you want to vote for that race, touch it and you will return to the proper page.
2. Touch "Print Ballot" and read the Printout to make sure that the machine has a printed record for the candidates you selected.
3. If the printed ballot is incorrect touch "Reject Ballot" and go back and correct the error.
4. If the printed ballot is correct touch "Cast Ballot."

You must finish voting by selecting **CAST BALLOT** for your vote to count.

If the machine malfunctions notify an election worker immediately. If this is your first time using a new voting machine, the Mississippi Secretary of State offers a demonstration on the web. Visit www.touchandvote.ms.gov to view an interactive demonstration.

IMPORTANT DATES:

MONDAY, SEPTEMBER 22, 2008

Absentee In-Person Voting Begins and First Day to Request an Absentee Ballot

MONDAY, SEPTEMBER 22, 2008

First Day to Request an Absentee Ballot

SEPTEMBER 29-OCTOBER 3, 2008

Extended Voter Registration Hours at Circuit Clerk's Offices from 8:00 am until 7:00 pm

FRIDAY, OCTOBER 3, 2008

Last day to register to vote for the General Election in the Circuit Clerk's Office, if the Clerk's office in your county is not open Saturday, October 4.

SATURDAY, OCTOBER 4, 2008

This is the last day to register to vote in the Circuit Clerk's office. Most Circuit Clerk's offices should remain open until noon for voter registration for the General Election. To be sure, call your Circuit Clerk before Saturday, October 4 to determine if it is open until noon on this day.

SUNDAY, OCTOBER 5, 2008

Voter registration deadline. Mail-in voter registration forms must be postmarked no later than this day to be accepted for the General Election. However, because many post offices are closed on weekends, you should mail-in or deliver your registration application before this date to avoid missing this deadline.

SATURDAY, OCTOBER 25, 2008 AND SATURDAY, NOVEMBER 1, 2008

Saturday Absentee In-Person Voting until noon at the Circuit Clerk's Office

MONDAY, NOVEMBER 3, 2008 AT 5:00 PM

Absentee Ballot Return Deadline

TUESDAY, NOVEMBER 4, 2008

Election Day / Polls are open from 7:00 am to 7:00 pm

IMPORTANT CONTACT INFORMATION

Hinds County

Hinds County Circuit Clerk 1st
District Office
407 E. Pascagoula St.
Jackson, MS 39205
601.968.6628

Mailing Address

P.O. Box 327
Jackson, MS 39205

Hinds County Circuit Clerk 2nd
District Office
127 W. Main St.
Raymond, MS 39154
601.857.8038

Mailing Address

P.O. Box 999
Raymond, MS 39154

Washington County

Washington County Circuit
Clerk
900 Washington Ave.
Greenville, MS 38702
662.978.2747

Mailing Address

P.O. Box 1276
Greenville, MS 38702

Harrison County

Harrison County Circuit Clerk
Office A
1801 23rd Ave.
Gulfport, MS 39502
228.865.4051

Mailing Address

P.O. Box 998
Gulfport, MS 39502

Harrison County Circuit Clerk
Office B
730 Dr. Martin Luther King Jr.
Blvd.
Biloxi, MS 39533
228-435-8233

Mailing Address

P.O. Box 235
Biloxi, MS 39533

Pike County

Pike County Circuit Clerk
218 E. Bay St.
Magnolia, MS 39652
601.783.2581

Mailing Address

P.O. Box 31
Magnolia, MS 39652

ADDITIONAL CONTACT INFORMATION

NAACP Legal Defense Fund
(LDF)
1.877.773.8683
vote@naacpldf.org

NAACP MS State Conference
601.353.6906

ACLU of Mississippi
601.355.6464

National Election Protection
Hotline
1.866.OUR.VOTE

National Poll Locator
1.866.MYVOTE1

KNOW YOUR RIGHTS ON ELECTION DAY!

YOU HAVE THE RIGHT TO VOTE WITHOUT PRESENTING ANY IDENTIFICATION TO ELECTION OFFICIALS. If you are otherwise qualified to vote, election officials will have you sign the receipt book next to your name and permit you to vote.

YOU HAVE THE RIGHT TO VOTE BY AN AFFIDAVIT BALLOT (a) if you declare that you are a registered voter in the jurisdiction in which you desire to vote and are eligible to vote in the election but your name does not appear on the pollbooks, (b) if you are not able to cast a regular Election Day ballot under a provision of state or federal law but are otherwise qualified to vote, or (c) if you have been illegally denied registration, after signing a written affidavit before one of the managers stating that you meet one of the above requirements.

YOU HAVE THE RIGHT TO BE ASSISTED WITH VOTING BY ANY PERSON YOU CHOOSE except your employer, an agent of your employer or an officer or agent of your union once you declare that you require assistance.

YOU HAVE THE RIGHT TO VOTE BY AFFIDAVIT BALLOT IN YOUR NEW WARD OR PRECINCT if you have moved within the same municipality or county within 30 days of the election or if you moved prior to 30 days before the election within the same county but you did not transfer your registration.

YOU HAVE THE RIGHT TO VOTE IF YOU HAVE BEEN CONVICTED OF A CRIME other than murder, rape, bribery, theft, arson, obtaining money or goods under false pretense, perjury, forgery, embezzlement or bigamy, including by absentee ballot while incarcerated, after registering by mail in the county in which you resided immediately prior to your incarceration.

YOU HAVE THE RIGHT TO REMAIN IN THE VOTING BOOTH for 10 minutes if no other voter is waiting to vote, or for 5 minutes if another voter is waiting.

YOU HAVE THE RIGHT TO VOTE AT THE CURBSIDE with the assistance of an election manager if you are physically disabled and unable to enter the polling place.

YOU HAVE THE RIGHT TO REQUEST FURTHER INSTRUCTIONS before casting your vote, if you need additional assistance after entering the voting booth.

YOU HAVE THE RIGHT TO AN OPEN AND CLEAR POLLING PLACE with no person present other than the election officers and two party challengers when you are within 30 feet from the polls or the room in which the election is being held.

If you have problems on Election Day such as being refused a ballot or turned away from the polling place, or would like to report voter intimidation, call the national Election Protection Hotline at 1.866.OUR.VOTE.

PREPARED TO
Vote 2008
preparedtovote.org

This brochure is a resource, not legal advice. It is provided for informational purposes only and not as a substitute for or supplement to the legal advice necessary to address the specific concerns of any individual. Moreover, your state may revise its laws after the publication of this brochure. Therefore, it is your responsibility to determine how all applicable laws concerning voter registration, voting, and the restoration of voting rights in your state affect you.

PREPARED TO VOTE Partners include:

PREPARED TO VOTE Partners include:
NAACP Legal Defense and Educational Fund, Inc. (LDF)
NAACP Mississippi State Conference
ACLU of Mississippi
Magnolia Bar Foundation



The NAACP Legal Defense and Educational Fund is America's legal counsel on issues of race. Through advocacy and litigation, LDF focuses on issues of education, voter protection, economic justice and criminal justice. We encourage students to embark on careers in the public interest through scholarship and internship programs. LDF pursues racial justice to move our nation toward a society that fulfills the promise of equality for all Americans.

99 Hudson Street, Suite 1600
New York, NY 10013
212.965.2200
www.naacpldf.org • vote@naacpldf.org

